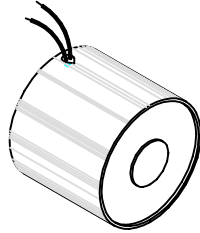


MAGNETIC SENSOR SYSTEMS

Tubular Electromagnet



Series E-77-82
0.82" DIA X 0.77"
[20.8 mm X 19.6 mm]

TOTAL WEIGHT: 1.1 OUNCES [31 GR]

duty cycle	1 (100%)	1/2 (50%)	1/4 (25%)	1/10 (10%)
maximum "ON" time, (Sec.)	∞	480	150	40
watts	1.25	2.50	5.00	12.50
approximate ampere turns	270	385	540	860

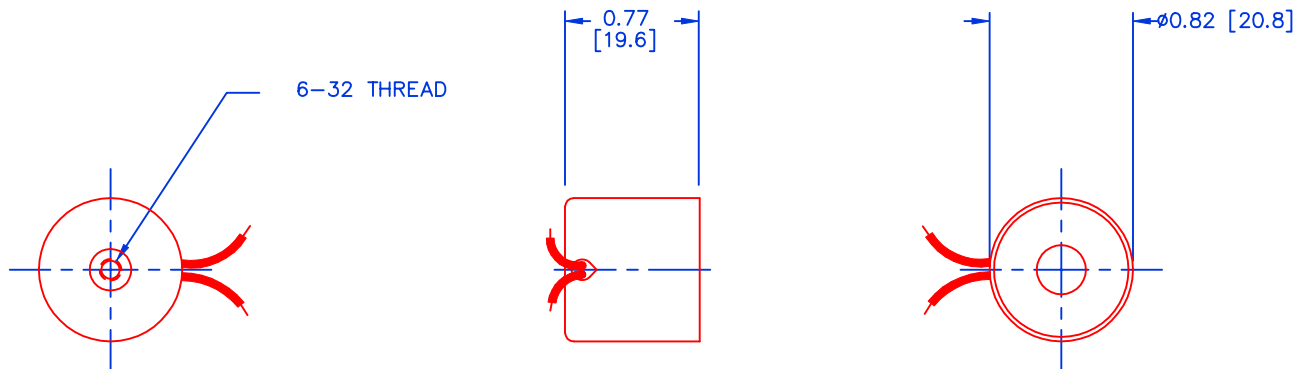
AWG number	resistance (Ω)	volts DC	volts DC	volts DC	volts DC
25	1.4	1.3	1.9	2.7	4.2
26	2.0	1.6	2.2	3.2	5.0
27	3.3	2.0	3.0	4.0	6.4
28	5.3	2.6	3.7	5.2	8.2
29	8.5	3.3	4.6	6.5	10.3
30	15.9	4.5	6.3	9.0	14.1
31	24.2	5.5	7.8	11.0	17.4
32	36.3	6.7	9.5	13.5	21.3
33	60.8	9.0	12.3	17.4	27.6
34	96.8	11.0	15.6	22.0	36.0
35	153	13.8	19.5	27.6	43.7
36	239	18.0	24.4	34.5	54.6
37	400	22.4	31.6	44.7	70.7
38	543	26.0	36.8	52.1	82.4
39	950	34.5	48.7	68.9	109
40	1525	43.7	61.8	87.3	138
41	2139	51.7	73.1	103	164
42	3620	67.3	95.1	135	213

HEAT SINK: For proper heat dissipation, body of electromagnet should be mounted on an equivalent of 1.25" x 1.25" x 1/8" metal plate in an unrestricted flow of air.

MAGNETIC SENSOR SYSTEMS

E-77-82

MECHANICAL DIMENSIONS



TOLERANCES: (UNLESS NOTED)

0.XXX: ± 0.005

0.XX : ± 0.010

X/X: $\pm 1/64$

COIL RESISTANCE: $\pm 10\%$

DIMENSIONS IN INCHES [mm]

TYPICAL HOLD FORCE VERSUS INPUT POWER

