

MAGNETIC SENSOR SYSTEMS

Tubular Electromagnet



Series E-66-75
0.75" DIA X 0.66"
[19.1 mm X 16.8 mm]

TOTAL WEIGHT: 0.8 OUNCES [23 GR]

duty cycle	1 (100%)	1/2 (50%)	1/4 (25%)	1/10 (10%)
maximum "ON" time, (Sec.)	∞	300	120	30
watts	1	2	4	10
approximate ampere turns	210	300	420	660

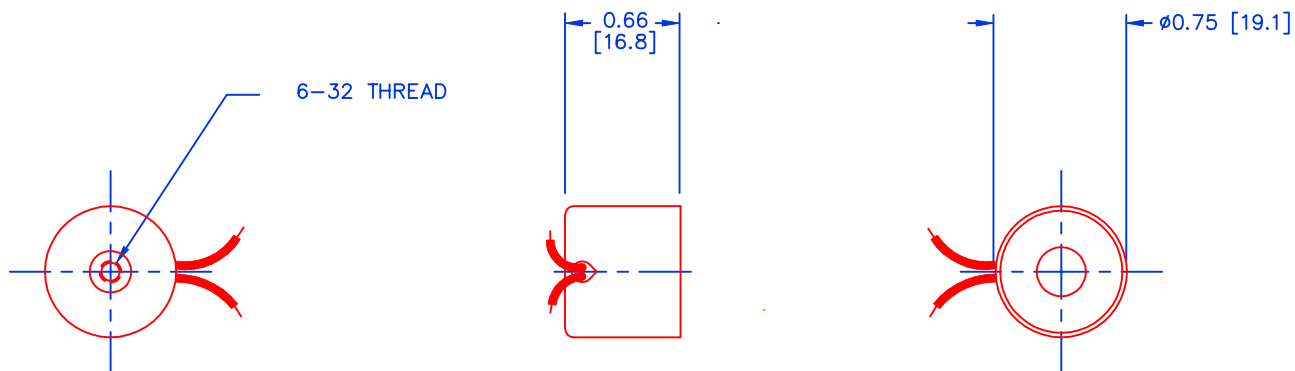
AWG number	resistance (Ω)	volts DC	volts DC	volts DC	volts DC
25	0.9	0.9	1.3	1.9	3.0
26	1.2	1.1	1.6	2.2	3.5
27	2.1	1.4	2.0	3.0	4.6
28	2.9	1.7	2.4	3.4	5.4
29	4.7	2.2	3.1	4.3	6.9
30	8.4	2.9	4.1	6.0	9.2
31	12.5	3.5	5.0	7.1	11.2
32	19.0	4.4	6.2	9.0	13.8
33	30.7	5.5	7.8	11.1	18.0
34	52.6	7.3	10.3	14.5	22.9
35	84.3	9.2	13.0	18.4	30.0
36	134	12.0	16.3	23.1	36.5
37	236	15.4	21.7	30.7	48.6
38	367	19.2	27.1	38.3	60.6
39	552	24.0	33.2	48.0	74.3
40	892	30.0	42.2	59.7	94.4
41	1268	36.0	50.4	72.0	113
42	1857	43.1	60.9	86.2	137

HEAT SINK: For proper heat dissipation, body of electromagnet should be mounted on an equivalent of 1.25" x 1.25" x 1/8" metal plate in an unrestricted flow of air.

MAGNETIC SENSOR SYSTEMS

E-66-75

MECHANICAL DIMENSIONS



TOLERANCES: (UNLESS NOTED)
 0.XXX: ±0.005
 0.XX : ±0.010
 X/X: ±1/64
 COIL RESISTANCE: ±10%
 DIMENSIONS IN INCHES [mm]

TYPICAL HOLD FORCE VERSUS INPUT POWER

