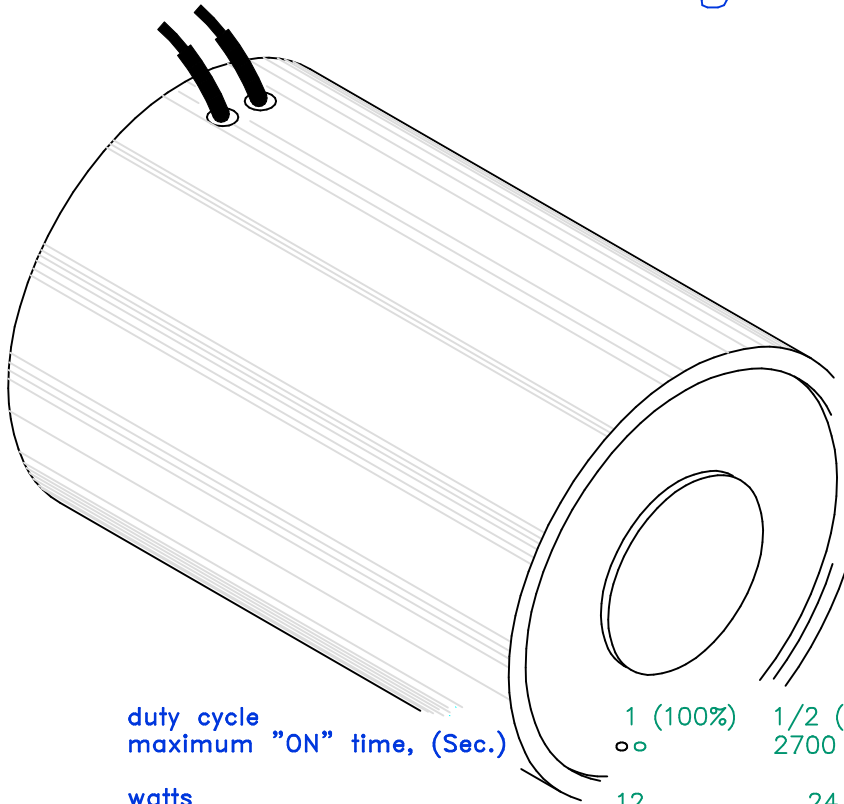


MAGNETIC SENSOR SYSTEMS

Tubular Electromagnet



Series E-40-300
3.0" DIA X 4.0"
[76.2 mm X 101.6 mm]

TOTAL WEIGHT: 5.8 LB [2.6 KG]

duty cycle	1 (100%)	1/2 (50%)	1/4 (25%)	1/10 (10%)
maximum "ON" time, (Sec.)	∞	2700	900	240
watts	12	24	48	120
approximate ampere turns	1815	2565	3630	5740

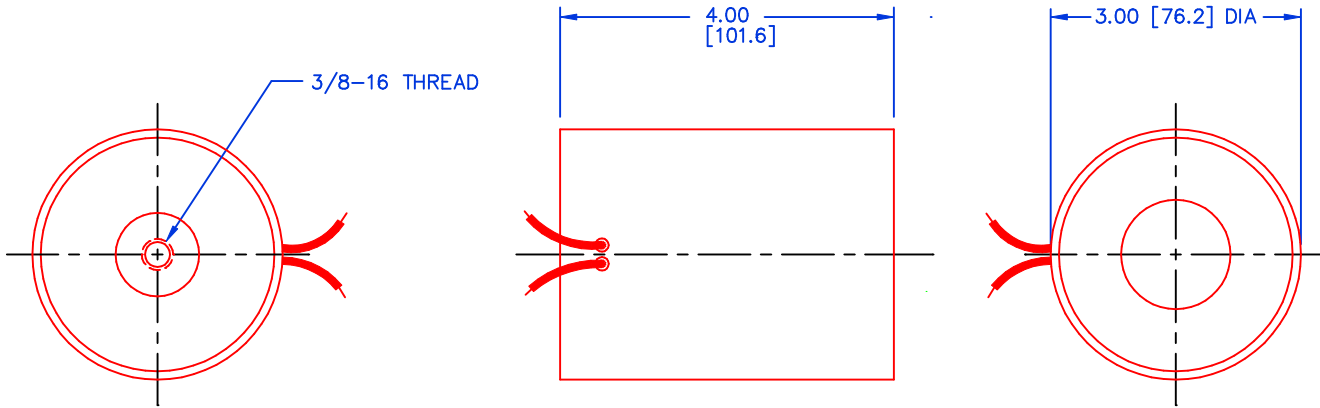
AWG number	resistance (Ω)	volts DC	volts DC	volts DC	volts DC
15	0.8	3.1	4.4	6.3	9.9
16	1.3	3.9	5.6	7.9	12.5
17	1.9	4.8	6.8	9.6	15.1
18	3.2	6.2	8.8	12.5	19.7
19	5.2	7.9	11.2	15.8	24.9
20	8.8	10.3	14.5	20.6	32.5
21	14.2	13.0	18.4	26.1	41.2
22	22.6	16.5	23.3	32.9	52.1
23	34.1	20.2	28.6	40.5	64.0
24	54.6	25.6	36.2	51.2	80.9
25	89.4	32.8	46.3	65.5	104
26	139	40.9	57.8	81.8	129
27	235	53.0	75.0	106	168
28	350	64.8	91.7	130	205
29	550	81.2	115	163	257
30	822	99.3	141	199	314
31	1447	132	186	264	417
32	2110	159	225	318	503
33	3450	204	287	407	644

HEAT SINK: For proper heat dissipation, body of electromagnet should be mounted on an equivalent of 4.0" x 4.0" x 1/4" metal plate in an unrestricted flow of air.

MAGNETIC SENSOR SYSTEMS

E-40-300

MECHANICAL DIMENSIONS



TOLERANCES: (UNLESS NOTED)
 0.XXX: ±0.005
 0.XX : ±0.010
 X/X: ±1/64
 COIL RESISTANCE: ±10%
 DIMENSIONS IN INCHES [mm]

TYPICAL HOLD FORCE VERSUS INPUT POWER

