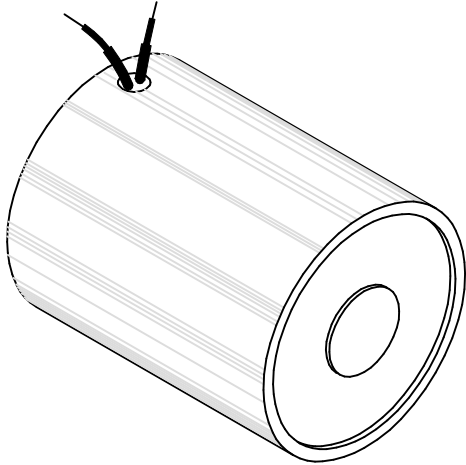


MAGNETIC SENSOR SYSTEMS

Tubular Electromagnet



Series E-22-150
1 1/2" DIA X 2.15"
[38.1 mm X 54.6 mm]

TOTAL WEIGHT: 11.9 OUNCES [340 GR]

| | | | | |
|---------------------------|----------|-----------|-----------|------------|
| duty cycle | 1 (100%) | 1/2 (50%) | 1/4 (25%) | 1/10 (10%) |
| maximum "ON" time, (Sec.) | ∞ | 600 | 180 | 60 |
| watts | 5 | 10 | 20 | 50 |
| approximate ampere turns | 860 | 1220 | 1720 | 2720 |

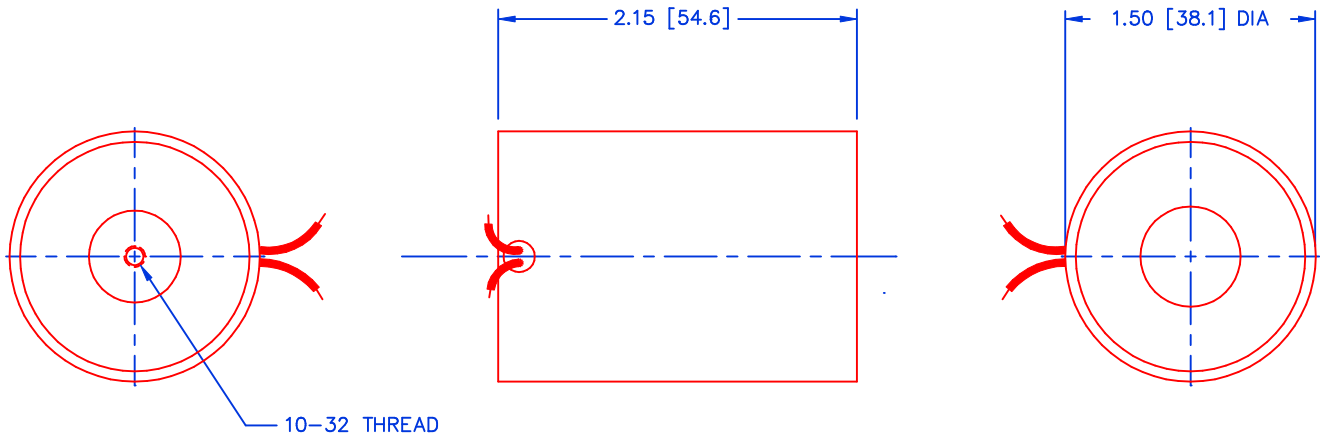
| AWG number | resistance (Ω) | volts DC | volts DC | volts DC | volts DC |
|------------|-------------------------|----------|----------|----------|----------|
| 19 | 0.7 | 1.9 | 2.7 | 3.8 | 6.0 |
| 20 | 1.0 | 2.2 | 3.1 | 4.4 | 6.9 |
| 21 | 1.9 | 3.1 | 4.4 | 6.2 | 9.7 |
| 22 | 3.0 | 3.9 | 5.5 | 7.7 | 12.2 |
| 23 | 4.6 | 4.8 | 6.8 | 9.6 | 15.2 |
| 24 | 7.4 | 6.1 | 8.6 | 12.2 | 19.2 |
| 25 | 12.1 | 7.8 | 11.0 | 15.6 | 24.6 |
| 26 | 20.2 | 10.0 | 14.2 | 20.1 | 31.8 |
| 27 | 30.5 | 12.3 | 17.5 | 24.7 | 39.1 |
| 28 | 46.6 | 15.3 | 21.6 | 30.5 | 48.3 |
| 29 | 76.4 | 19.5 | 27.6 | 39.1 | 61.8 |
| 30 | 126 | 25.1 | 35.5 | 50.2 | 79.4 |
| 31 | 192 | 31.0 | 43.8 | 62.0 | 98 |
| 32 | 305 | 39.1 | 55.2 | 78.1 | 124 |
| 33 | 483 | 49.1 | 69.5 | 98.3 | 155 |
| 34 | 787 | 62.7 | 88.7 | 126 | 198 |
| 35 | 1260 | 79.4 | 112 | 159 | 251 |
| 36 | 1976 | 99.4 | 141 | 199 | 314 |
| 37 | 2930 | 121 | 171 | 242 | 383 |

HEAT SINK: For proper heat dissipation, body of electromagnet should be mounted on an equivalent of 6.0" x 6.0" x 1/8" metal plate in an unrestricted flow of air.

MAGNETIC SENSOR SYSTEMS

E-22-150

MECHANICAL DIMENSIONS



TOLERANCES: (UNLESS NOTED)

0.XXX: ± 0.005

0.XX : ± 0.010

X/X: $\pm 1/64$

COIL RESISTANCE: $\pm 10\%$

DIMENSIONS IN INCHES [mm]

TYPICAL HOLD FORCE VERSUS INPUT POWER

