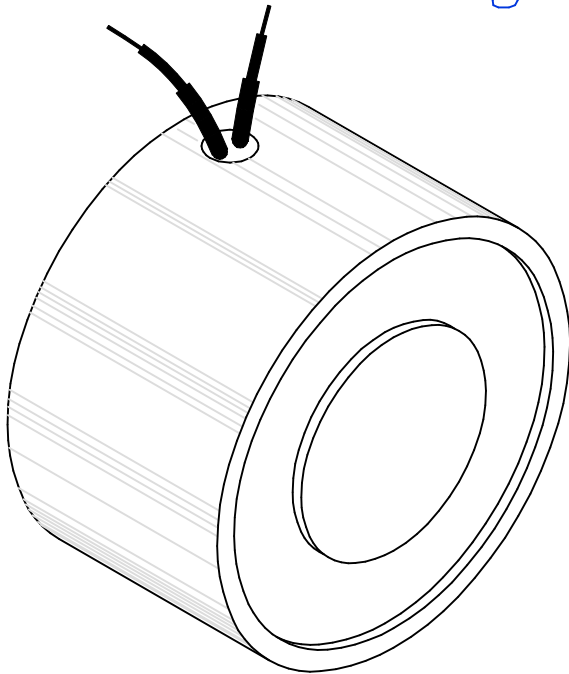


MAGNETIC SENSOR SYSTEMS

Tubular Electromagnet



Series E-16-260
2 5/8" DIA X 1.56"
[66.8 mm X 39.6 mm]

TOTAL WEIGHT: 29.5 OUNCES [836 GR]

duty cycle	1 (100%)	1/2 (50%)	1/4 (25%)	1/10 (10%)
maximum "ON" time, (Sec.)	∞	2000	600	120
watts	5	10	20	50
approximate ampere turns	600	850	1200	1900

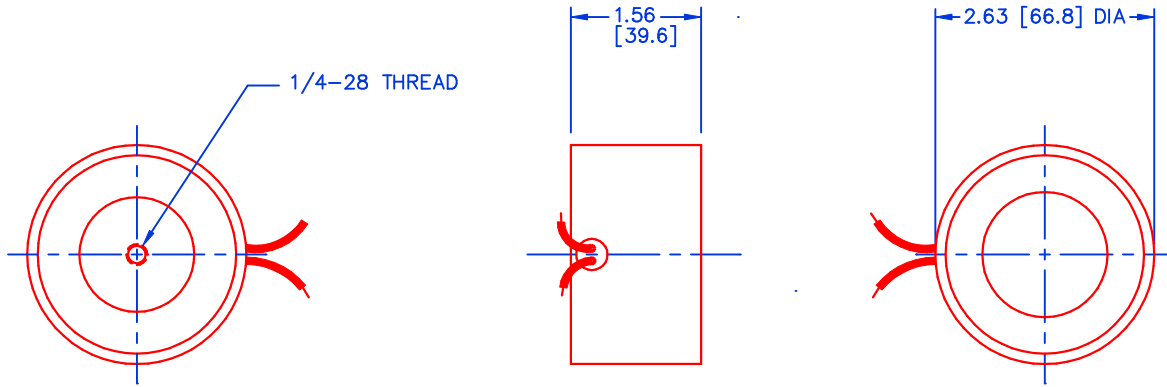
AWG number	resistance (Ω)	volts DC	volts DC	volts DC	volts DC
19	1.4	2.6	3.6	5.2	8.1
20	1.8	2.9	4.1	5.8	9.1
21	3.0	3.8	5.4	7.7	12.1
22	4.5	4.8	6.8	9.6	15.2
23	7.8	6.1	8.6	12.1	19.1
24	12.0	7.7	10.9	15.5	24.5
25	18.5	9.6	13.5	19.1	30.3
26	32.5	12.5	17.7	25.1	39.7
27	48.4	15.7	22.2	31.4	49.6
28	75.2	19.8	28.0	39.6	62.6
29	127	25.4	36.0	50.9	80.4
30	201	31.7	44.9	63.4	100
31	313	39.1	55.4	78.3	124
32	469	48.8	69.0	97.6	154
33	770	62.1	87.8	124	196
34	1330	80.3	114	161	254
35	2257	103	146	207	327
36	3225	128	181	256	404

HEAT SINK: For proper heat dissipation, body of electromagnet should be mounted on an equivalent of 3.0" x3.0" x 1/4" metal plate in an unrestricted flow of air.

MAGNETIC SENSOR SYSTEMS

E-16-260

MECHANICAL DIMENSIONS



TOLERANCES: (UNLESS NOTED)
 0.XXX: ±0.005
 0.XX : ±0.010
 X/X: ±1/64
 COIL RESISTANCE: ±10%
 DIMENSIONS IN INCHES [mm]

TYPICAL HOLD FORCE VERSUS INPUT POWER

