

MAGNETIC SENSOR SYSTEMS

Tubular Low Profile Electromagnet



Series E-05-125
1 1/4" DIA X 0.50"
[31.8 mm X 12.7 mm]

TOTAL WEIGHT: 1.8 OUNCES [51 GR]

duty cycle	1 (100%)	1/2 (50%)	1/4 (25%)	1/10 (10%)
maximum "ON" time, (Sec.)	∞	420	120	30
watts	1.25	2.5	5	12.5
approximate ampere turns	840	1180	1670	2650

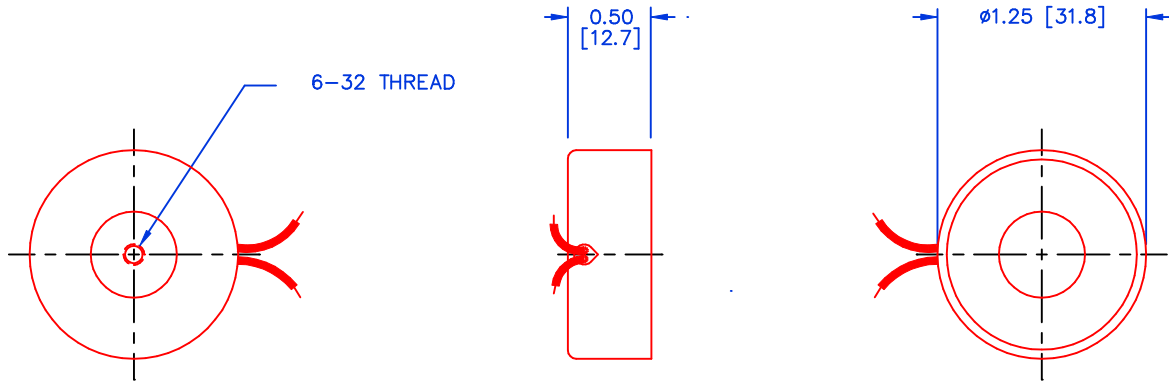
AWG number	resistance (Ω)	volts DC	volts DC	volts DC	volts DC
24	0.8	1.0	1.4	2.0	3.1
25	1.3	1.3	1.8	2.5	4.0
26	1.9	1.6	2.2	3.1	4.9
27	3.0	1.9	2.7	3.9	6.1
28	4.7	2.4	3.4	4.9	7.7
29	7.3	3.0	4.3	6.0	9.5
30	11.9	3.9	5.4	7.7	12.2
31	18.9	4.9	6.9	9.7	15.4
32	28.4	6.0	8.4	12.0	18.8
33	46.0	7.6	10.7	15.2	24.0
34	72.3	9.5	13.4	19.0	30.1
35	117	12.1	17.1	24.2	38.2
36	193	15.5	22.0	31.1	49.1
37	337	20.5	29.0	41.1	64.9
38	434	24.0	33.0	46.6	73.7
39	756	30.7	43.5	61.5	97.2
40	1197	38.7	54.7	77.4	122
41	1912	48.9	69.1	97.8	155

HEAT SINK: For proper heat dissipation, body of electromagnet should be mounted on an equivalent of 2.0" x 2.0" x 1/8" metal plate in an unrestricted flow of air.

MAGNETIC SENSOR SYSTEMS

E-05-125

MECHANICAL DIMENSIONS



TOLERANCES: (UNLESS NOTED)
 0.XXX: ± 0.005
 0.XX : ± 0.010
 X/X: $\pm 1/64$
 COIL RESISTANCE: $\pm 10\%$
 DIMENSIONS IN INCHES [mm]

TYPICAL HOLD FORCE VERSUS INPUT POWER

